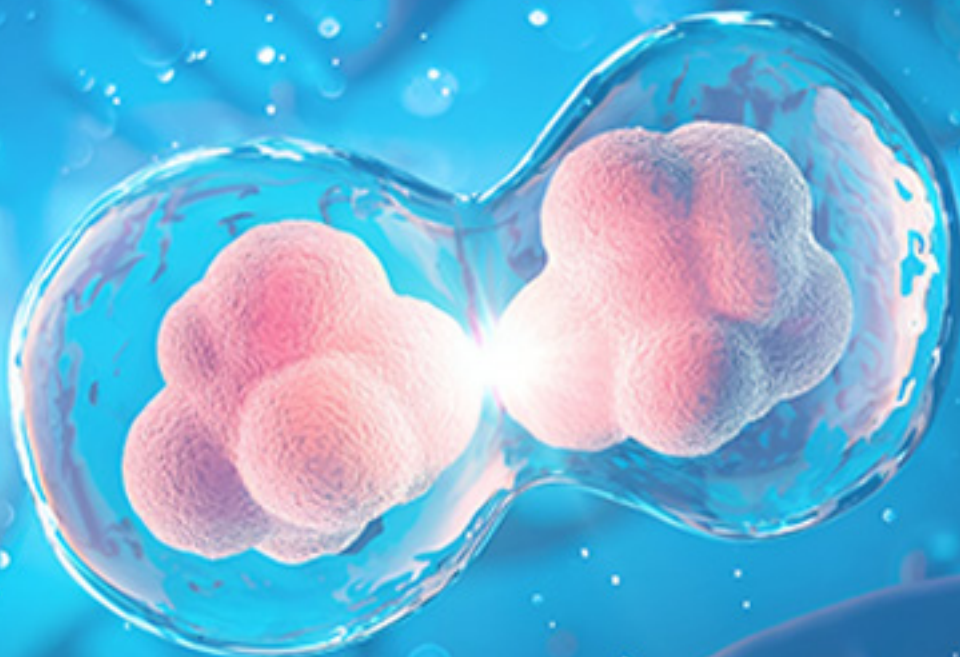


# Our Infrastructure for Customized Integrated Solutions: Tailored for your Biopharma R&D Success

Veeda Biopharma leverages its state-of-the-art infrastructure to accelerate development programs across diverse biopharmaceutical solutions such as Analytics & Characterization, Bioprocess Development, Discovery Biology, and Clinical Bioanalysis.



# State-of-the-art Infrastructure across Biopharma Solutions

Solutions	Infrastructure
Analytics & Characterization	<ul style="list-style-type: none"> <li>Ⓞ High Resolution Mass Spectrometry – Waters Xevo G3 QToF &amp; Thermo QExactive Orbitrap</li> <li>Ⓞ High Performance Liquid Chromatography – Shimadzu Prominence i-Series</li> <li>Ⓞ Capillary Electrophoresis – Sciex PA800 Plus</li> <li>Ⓞ Gel Electrophoresis and TransBlot - BioRad</li> <li>Ⓞ Size Exclusion Chromatography/Field Flow Fractionation – Multi-Angle Light Scattering – Postnova AF2000</li> <li>Ⓞ Circular Dichroism Spectroscopy – Chirascan V100</li> <li>Ⓞ Fourier Transform InfraRed –Bruker Confocheck</li> <li>Ⓞ Differential Scanning Calorimetry – TA Instruments nanoDSC</li> <li>Ⓞ Dynamic Light Scattering – Anton Paar Litesizer 500</li> <li>Ⓞ ZipChip – 908 Devices</li> </ul>
Bioprocess Development	<ul style="list-style-type: none"> <li>Ⓞ Automated cell counter (Beckman-Coulter)</li> <li>Ⓞ Electroporator (Thermo)</li> <li>Ⓞ Bioreactors (2 L/5 L , Sartorius)</li> <li>Ⓞ AKTA pure 150 (Cytiva)</li> <li>Ⓞ Multiskan, FC (Thermo)</li> <li>Ⓞ qPCR (ABI 7500 Fast, Thermo)</li> <li>Ⓞ Peristaltic pump (Cole-Parmer)</li> <li>Ⓞ DNA Electrophoresis systems (Major Sciences)</li> <li>Ⓞ Gel Documentation system (Syngene, UK)</li> <li>Ⓞ Refrigerated centrifuge (Kubota)</li> <li>Ⓞ ISO Class 7 clean room</li> <li>Ⓞ Biosafety cabinets (Esco)</li> <li>Ⓞ Phase contrast Inverted Microscope (Olympus)</li> </ul>
Discovery Biology	<ul style="list-style-type: none"> <li>Ⓞ Tecan SPARK</li> <li>Ⓞ SPR - Biacore 1S+</li> <li>Ⓞ Luminex Intelliplex</li> <li>Ⓞ ELISpot</li> <li>Ⓞ Agilent Novocyte</li> <li>Ⓞ BD FACS Lyric</li> <li>Ⓞ Integra Assist Plus</li> <li>Ⓞ Quantitative Real-time PCR</li> </ul>
Clinical Bioanalysis	<ul style="list-style-type: none"> <li>Ⓞ Spectrophotometry- Biotek Synergy H1</li> <li>Ⓞ MSD Quickplex SQ 120 (ECL)</li> <li>Ⓞ Sciex 6500+ with Acquity Premier UPLC</li> <li>Ⓞ Integra Assist Plus Liquid Handler</li> <li>Ⓞ BD FACSLyric Flow Cytometer</li> <li>Ⓞ ELISpot – AID vSpot Spectrum</li> <li>Ⓞ CO2 Incubators, Inverted Microscope, BSCs, Automatic Cell Counters etc to handle cell-based assays</li> </ul>



## Veeda Clinical Research Limited (Biopharma Division)

No. P3-A, 1st Main Road, Peenya Industrial Area,  
1st Stage Bengaluru 560058, India  
info@veedacr.com | www.veedacr.com | +91 7967773000

• Partners in creating a healthier tomorrow •