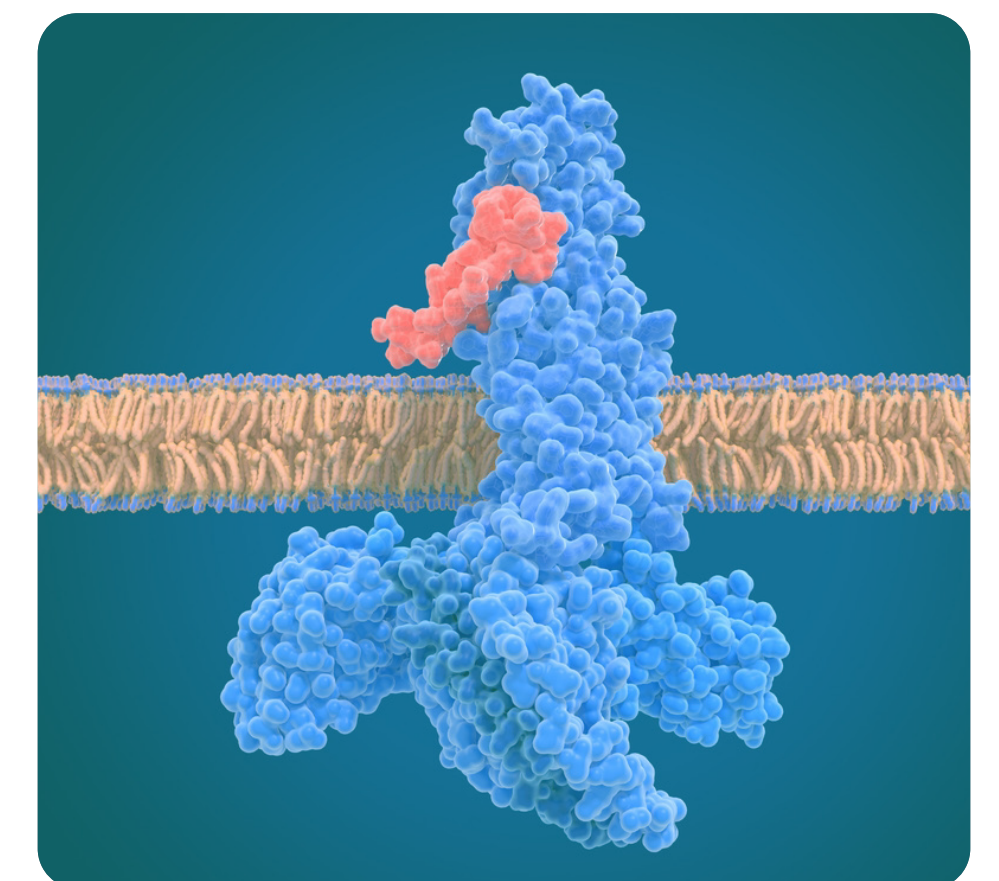
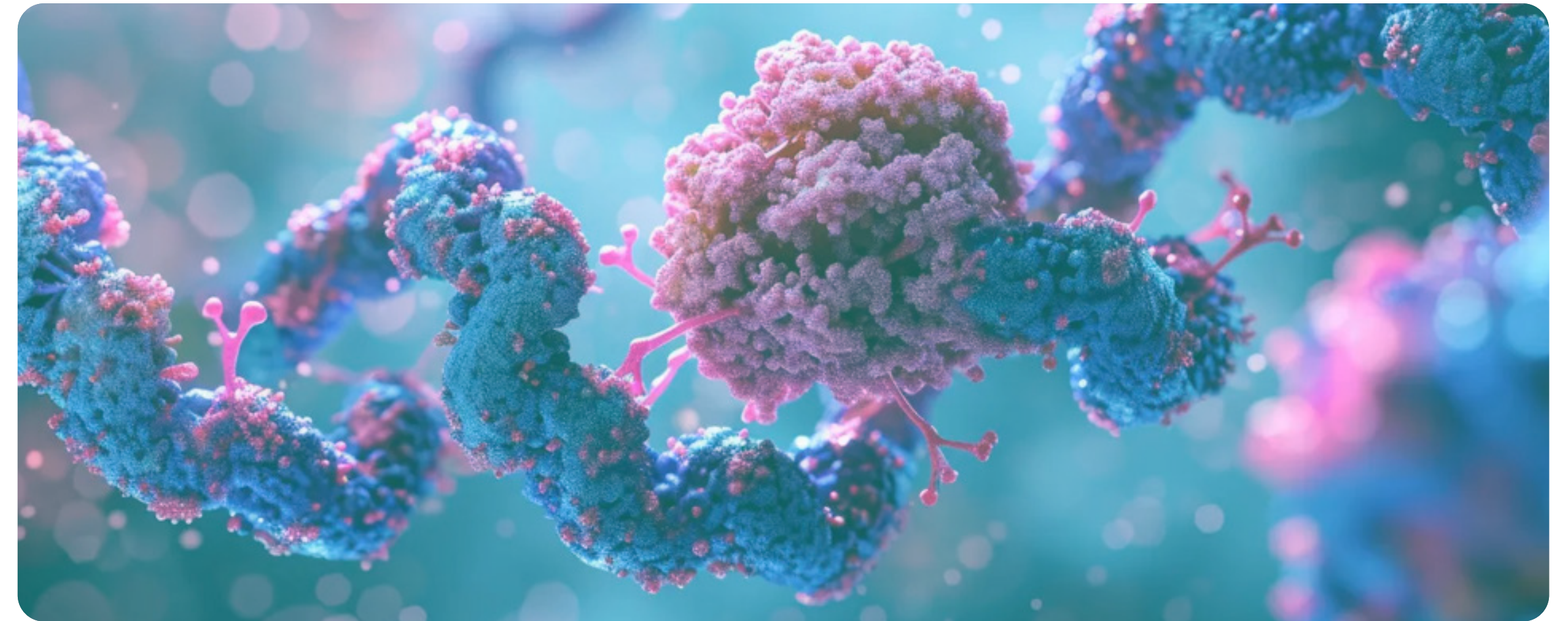


From Insulins to GLP-1 Receptors:

Preparing for the Next Wave
of Off-Patent Molecules



Supporting You at Every Stage of your Drug Development Journey

Preclinical

- ✕ Discovery
- ✕ Chemistry
- ✕ Bioanalysis
- ✕ Toxicology

Biopharma

- ✕ Clinical Bioanalysis solution for Bio Therapeutics
- ✕ Non-Clinical Characterization Solutions - Discovery Biology, Bioprocess, and Analytical Characterization

Clinical Studies

- ✕ Phase I Healthy Volunteer study for Antidiabetic drug
- ✕ Type 2 Diabetic Phase II/Phase III Trials
- ✕ Phase IV & PMS Studies
- ✕ Healthy Volunteer Bioequivalence (BE)/ Bioavailability (BA) studies involving Glucose Clamp & GLP1

Bioanalytical Solutions

- ✕ Bioanalytical Method Development and Validations for NCEs & Generics



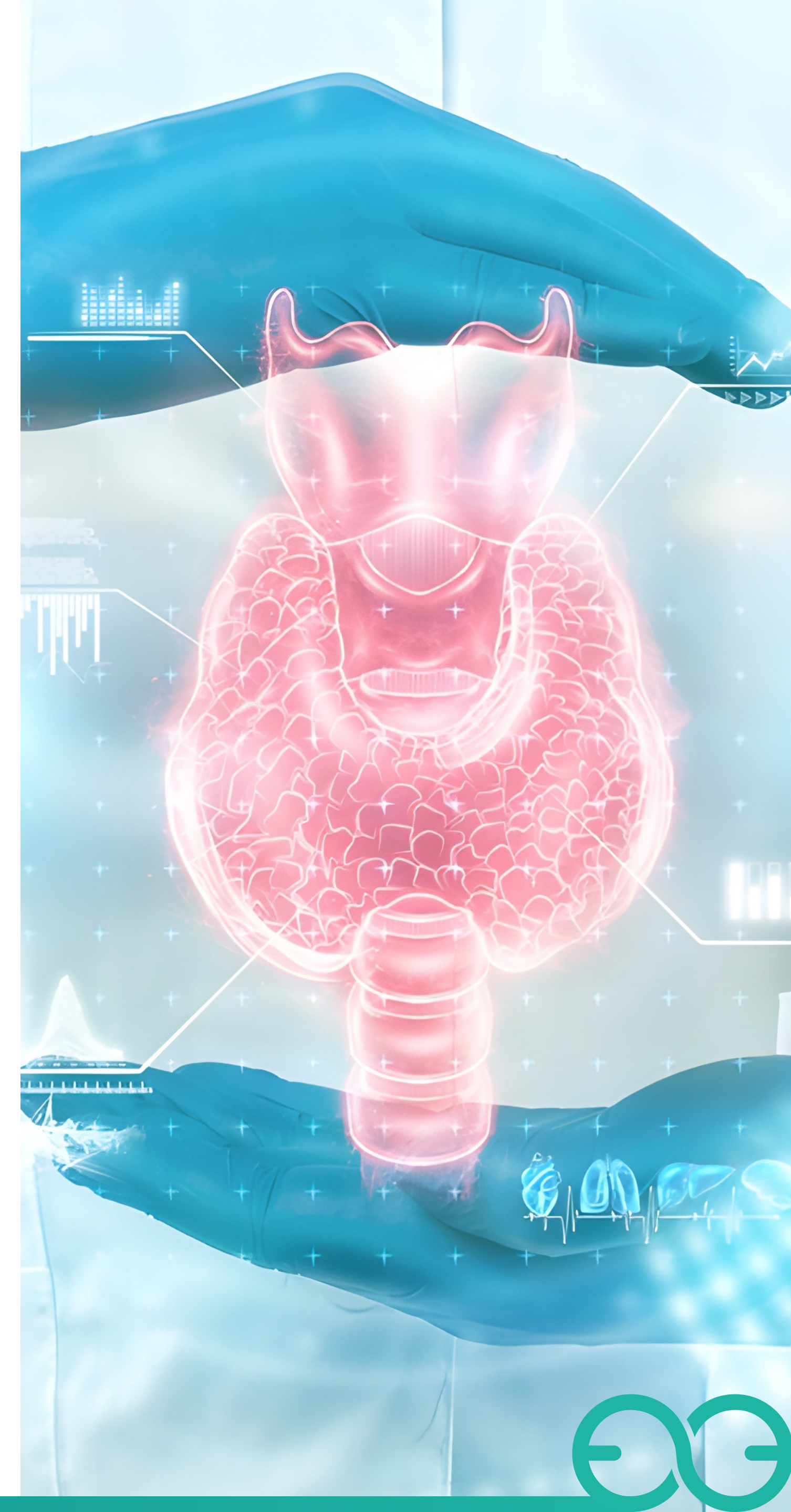
State-of-the-Art Infrastructure & Expertise for Endocrinology Drug Development

Operational Capabilities

- ✕ Experience in Recruiting 400+ subjects
- ✕ 38 Endocrinologists across 20 sites
- ✕ GCP Trained Study Staff
- ✕ Trained doctor and team in Advanced Cardiac Life Support (ACLS) and Basic Life Support (BLS)
- ✕ Utilized 1322 clamps in 15 studies
- ✕ Experience ranging from 8 to 36 hours per clamp
- ✕ Capable of performing 4 to 6 clamps per day for efficient study completion
- ✕ Trained senior staff specialized in Endocrinology studies with a PHD in Medicine and Pharmacology.
- ✕ Tertiary care tie-up with Sterling hospital for advanced medical care

Advanced Facilities

- ✕ Yellow Spring Instruments (YSI) for accurate blood glucose assessment
- ✕ 12 state-of-the-art beds with backup generators
- ✕ 30-bed Phase-I capacity across two units.
- ✕ Special care area with cardiac monitor, defibrillator, ECG machine, suction machine, oxygen cylinder, cardiac arrest kit, and anaphylaxis kit.
- ✕ Resuscitation centre with a fully equipped resuscitation trolley and emergency medications



Stay Ahead of the Curve: Veeda's Solution for Molecules going Off-Patent

Biotherapeutics Going off Patent



- Dulaglutide
- Exenatide

- Abaloparatide

- Insulin degludec
- Semaglutide
- Insulin degludec#-liraglutide

Molecules Requiring Healthy Volunteer Generic Bioequivalence (BE) Studies:



- Empagliflozin
- Linagliptin
- Empagliflozin#metformin
- Linagliptin#metformin
- Metformin

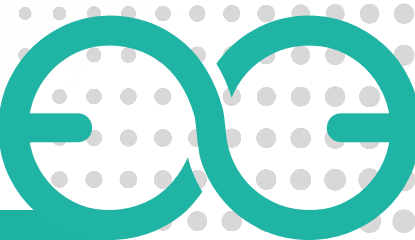
- Canagliflozin
- Canagliflozin#metformin

- Empagliflozin#linagliptin
- Dapagliflozin#metformin



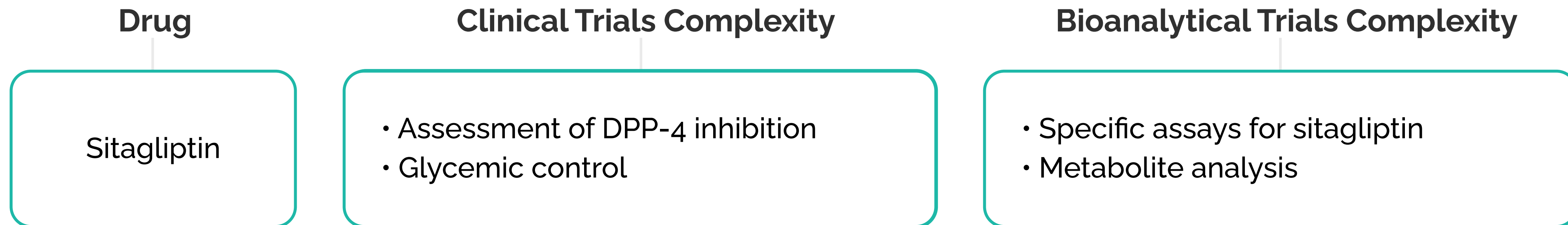
Diverse Insulin Portfolio: Successfully executed 12 Different Studies

Insulin Product	Clinical Trials Complexity	Bioanalytical Trials Complexity
Insulin Glargine	<ul style="list-style-type: none">• Individualized titration• Hypoglycemia management	<ul style="list-style-type: none">• Sensitive long-acting assays• Metabolite analysis
Insulin Aspart	<ul style="list-style-type: none">• Postprandial glycemic control• Injection site rotation	<ul style="list-style-type: none">• Rapid-acting assays• Injection site impact
Insulin Wosulin	<ul style="list-style-type: none">• Individual patient response• Hypoglycemia risk assessment	<ul style="list-style-type: none">• Development of Wosulin-specific assays• Pharmacokinetic/pharmacodynamic differences



Insights into Sitagliptin: Diabetes Care with DPP-4 Inhibitors

- DPP-4 inhibitors like Sitagliptin prolong the action of GLP-1 and GIP, resulting in increased insulin secretion and decreased glucagon secretion. This mechanism ultimately helps to lower blood sugar levels in patients with type 2 diabetes.



Completed Oral Antidiabetic Glucose Clamp Studies with 20 Subjects



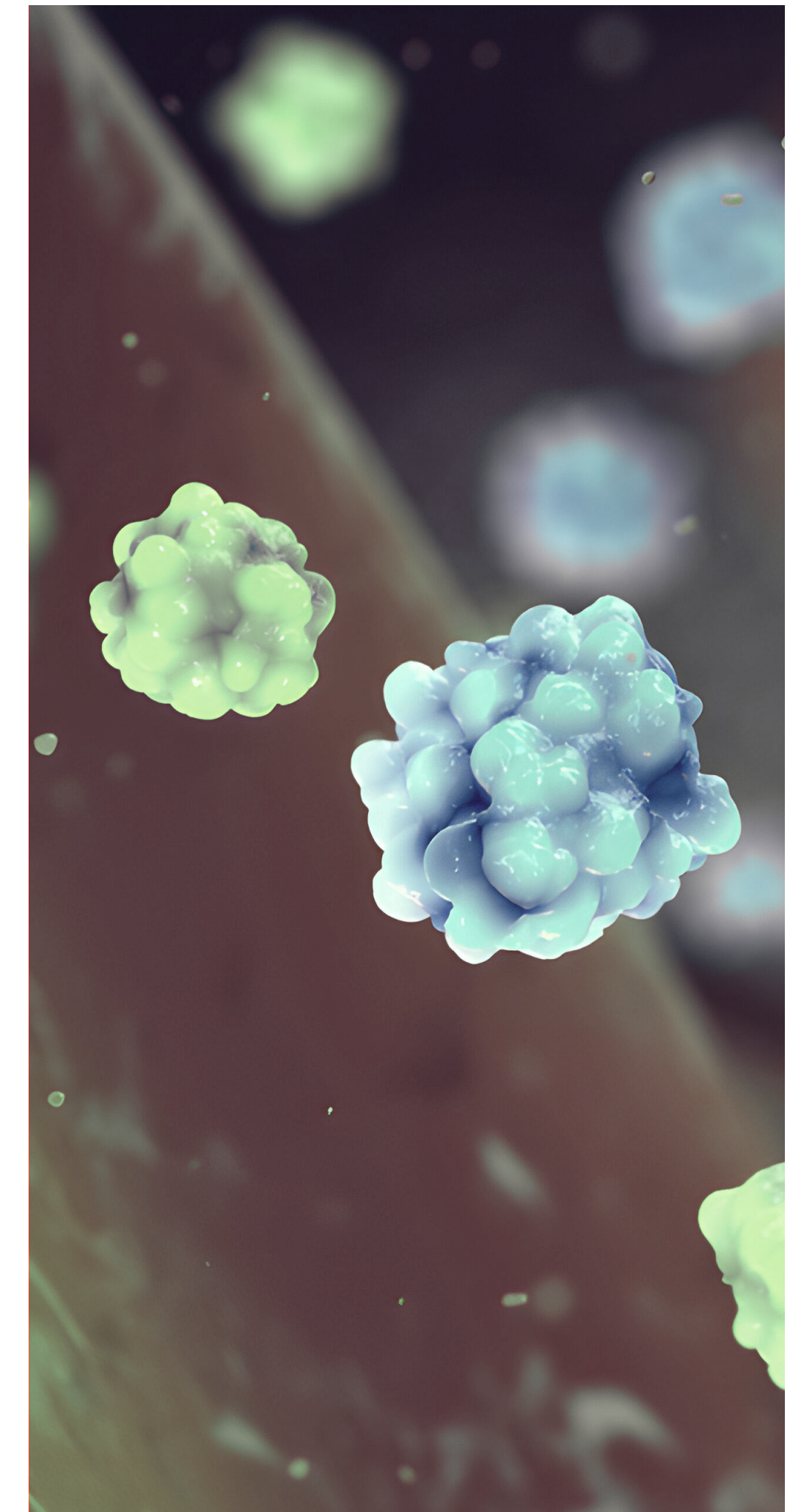
Biosimilar Experience across Different Diabetic Molecules

- Specialized in clinical and bioanalytical evaluation, with expertise in immunogenicity assessment using advanced techniques such as HPLC, ELISA and LC-MS/MS
- Biosimilar development includes rigorous analytical techniques such as intact mass analysis, peptide mapping, and amino acid sequencing by focusing on peptides like Insulin, & C-Peptide
- Advanced methods like capillary electrophoresis to assess molecular heterogeneity and confirm the equivalence of our biosimilar

Completed Healthy Volunteer GLP-1 Studies for -

Liraglutide

Semaglutide



India: +91 79677 73000
Europe: +30 210 699 7247



info@veedalifesciences.com



www.veedalifesciences.com

Excellence
In Everything